

ICEIS 2003
Angers 23. April 2003

The Essence of Knowledge Management

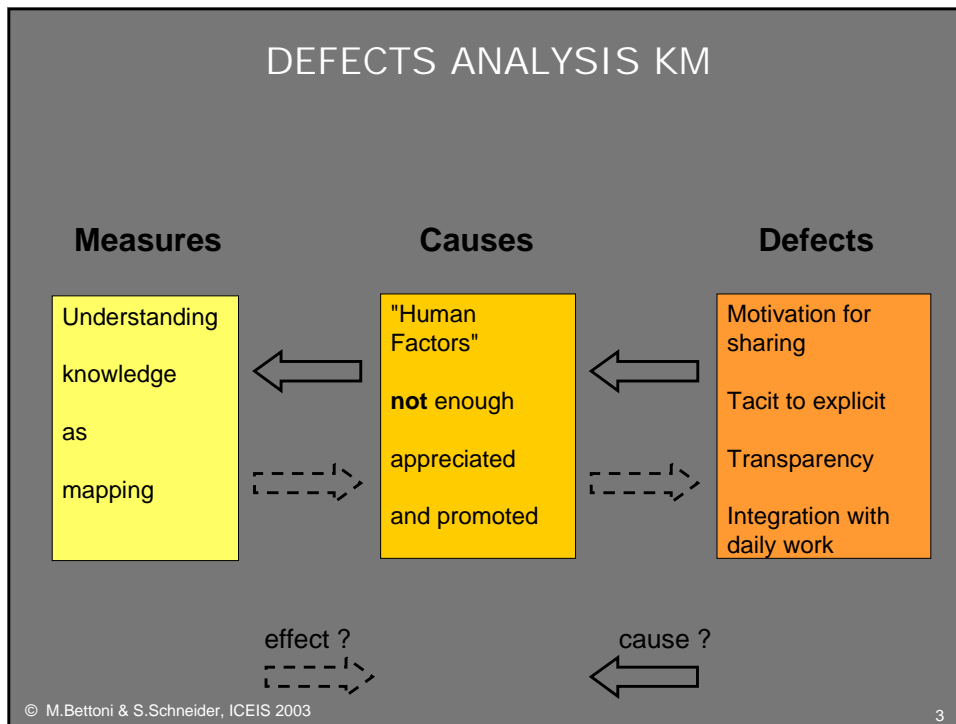
A Constructivist Approach

Marco C. Bettoni & Sibylle Schneider
www.weknow.ch

LESSON LEARNED FROM KE AND ART

Our
understanding of knowledge
should promote
the human factors

© M.Bettoni & S.Schneider, ICEIS 2003 2



LESSON LEARNED FROM CYBERNETICS

Understanding knowledge
as "mapping"
(as "Logic of Reality")
negates
the human factors

© M.Bettoni & S.Schneider, ICEIS 2003 4

MAIN MESSAGE

Understanding knowledge
as "construction"
(as "Logic of Experiences")
promotes
the human factors

© M.Bettoni & S.Schneider, ICEIS 2003 5

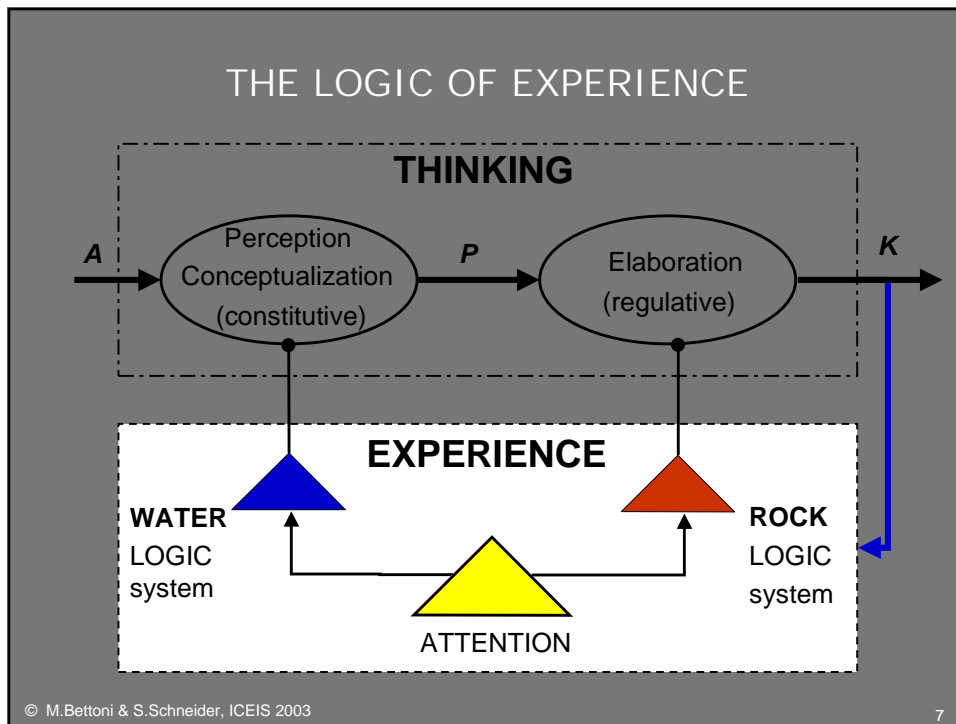
KNOWLEDGE AS CONSTRUCTION:
EXAMPLE

look at see

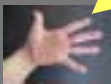

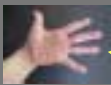
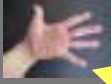
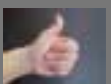
listen to hear

- *WHAT* we know depends on *HOW* we know!
- the *WHAT* is valid if the *HOW* is valid!

© M.Bettoni & S.Schneider, ICEIS 2003 6



LEADING PRINCIPLES OF CONSTRUCTIVE KM

	Constructive:	How determines What
	Inseparable:	Knowledge & its Owner
	Balance:	Economic Constraints and Human-Social requirements
	Pact:	Negotiate a knowledge contract
	Community:	Networking and Cooperation

© M.Bettoni & S.Schneider, ICEIS 2003 9

COMMUNITY



The challenge for future KM

© M.Bettoni & S.Schneider, ICEIS 2003 10